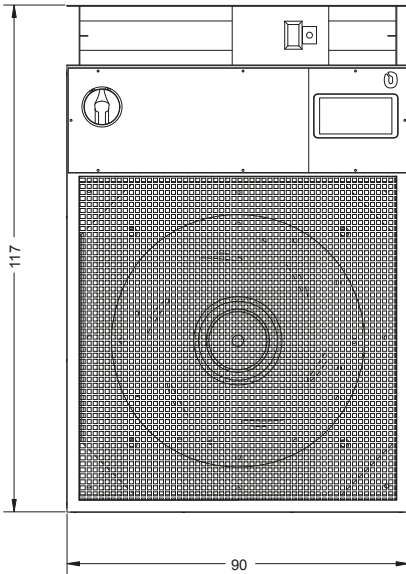
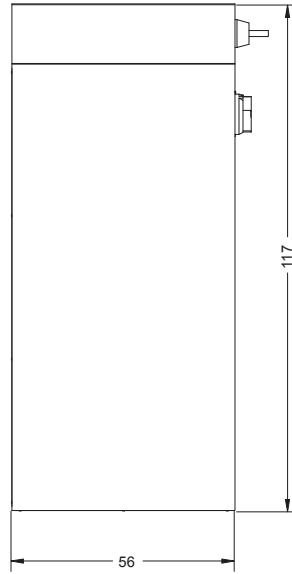


Model	RADI 200/4 EXTRACTOR	Voltage	380-440 Volt 50Hz	Weight	73 kg
Series	BLDC EC FAN	Power	2.700 W	Sound pressure level	79 Db
IP Code	43 BH	Maximum flow rate	13.500 m3/h	Total dimensions	90x117x56 cm
		Head	400 Pa	Suction size	50x80 cm

FRONT



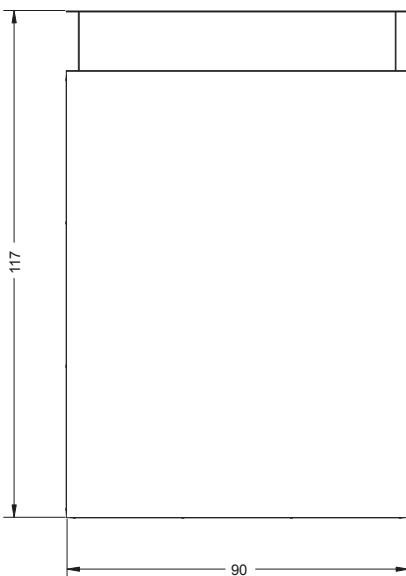
SIDE



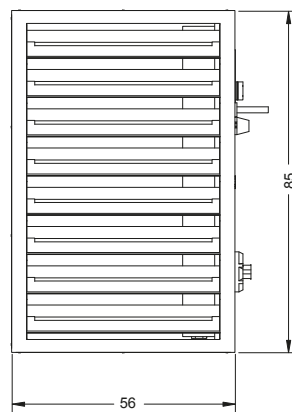
SMART+ MODEL



REAR



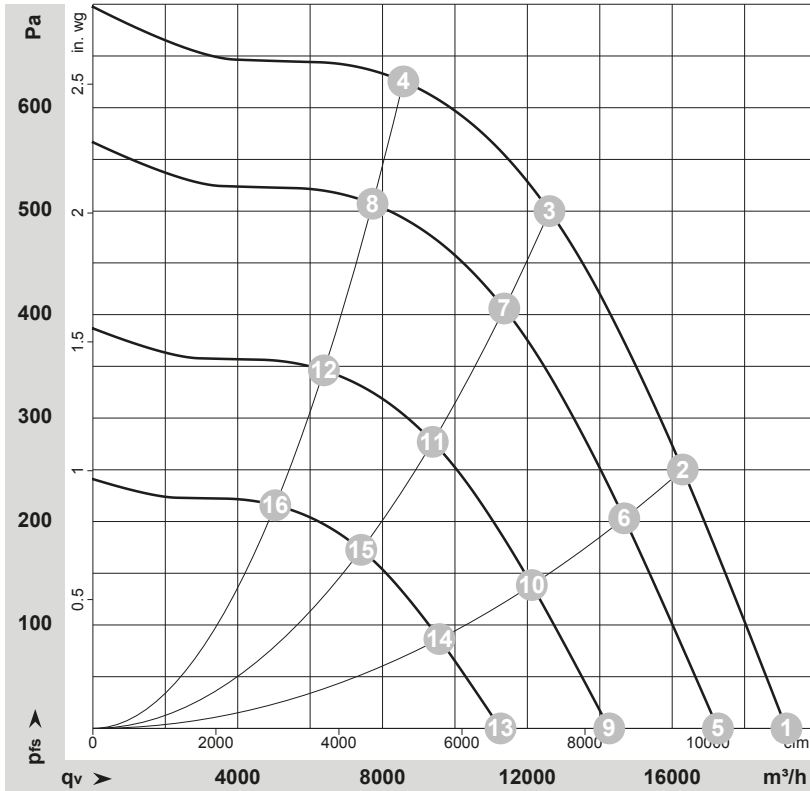
PLANT



SLAVE MODEL



Curves: Airperformance50Hz



Product information

Power supply:	380-440 V/3F/50Hz
Maximum power consumption:	2700 W
Maximum current consumption:	3,90 A
Air flow range:	4600 - 13,500 m³/h
Nominal head:	400 Pa
Maximum noise level:	79 Db at 5 metres
Air flow rate modulation:	No
Electric fan motor:	Brushless
Number of fans:	1
Fan control:	0 - 10 Vdc analogue
Fan type:	Radial
Number of filters:	1
Filter size:	800x800x98
Air filter type:	G4
Inlet air damper:	ON/OFF
Rain screen with anti-mouse mesh:	No
Servo motor damper:	Integrated
External intake temperature probe:	Integrated
Indoor environment probes:	2 (standard); 5 (optional on request)
External air humidity probe:	Integrated
Operating temperature:	5 - 55 °C
Installation:	Floor standing
Control and regulation:	PLC
PLC redundancy:	PLC with dual Keep Alive processors
Digital output alarms:	Yes
Well-being button management:	Yes
Event log memory:	Yes
Stop contact in case of FIRE:	Yes
Stop contact in case of FLOOD:	Yes
Remote ON/OFF:	Yes
ON/OFF of room air conditioners:	Yes
Alarm management of room air conditioners:	Yes
Air conditioners managed with digital I/O:	4
Air conditioners managed with rs485:	6
Manual force command dig.INPUT:	Yes
Operating logic:	Climate Controlled
User interface:	Colour touch screen display with screen saver
Communication:	RS485 / Modbus IP master/slave
Slave system:	Analogue slave
Degree of protection:	IP43 BM*
Machine size:	90x90x117 cm
Weight:	75 kg
Type of switch to be installed:	Earth leakage circuit breaker 0.3 type B

Measured values

	Wired	U	f	n	P _{ed}	I	LpA _{in}	LwA _{in}	LwA _{out}	qv	P _{fs}	qv	P _{fs}
		V	Hz	min ⁻¹	W	A	dB(A)	dB(A)	dB(A)	m³/h	Pa	cfm	in. wg
1	3~	400	50	1270	1534	2.45	79	86	88	19155	0	11275	0.00
2	3~	400	50	1270	2194	3.42	74	82	85	16290	250	9590	1.00
3	3~	400	50	1270	2650	4.10	69	77	81	12610	500	7425	2.01
4	3~	400	50	1270	2460	3.81	71	78	83	8575	625	5050	2.51
5	3~	400	50	1150	1123	1.80	76	83	86	17265	0	10160	0.00
6	3~	400	50	1150	1604	2.50	71	79	83	14675	203	8640	0.81
7	3~	400	50	1150	1941	3.00	66	74	79	11365	406	6690	1.63
8	3~	400	50	1150	1797	2.78	68	76	80	7725	507	4545	2.04
9	3~	400	50	950	633	1.01	71	78	81	14260	0	8395	0.00
10	3~	400	50	950	904	1.41	67	74	78	12125	139	7135	0.56
11	3~	400	50	950	1094	1.69	61	69	74	9385	277	5525	1.11
12	3~	400	50	950	1013	1.57	63	71	75	6380	346	3755	1.39
13	3~	400	50	750	312	0.50	65	72	75	11260	0	6625	0.00
14	3~	400	50	750	445	0.69	61	68	72	9570	86	5635	0.35
15	3~	400	50	750	538	0.83	55	63	68	7410	173	4360	0.69
16	3~	400	50	750	498	0.77	57	65	69	5035	216	2965	0.87

Wired = Wiring · U = Voltage · f = Frequency · n = Speed (rpm) · P_{ed} = Power consumption · I = Current draw · LpA_{in} = Sound pressure level intake side · LwA_{in} = Sound power level intake side
LwA_{out} = Sound power level outlet side · qv = Air flow · P_{fs} = Pressure increase

Product description

The RotoKalt Summano Stans Ext Smart + 400, is a ductable Free Cooling system with underfloor or overfloor delivery, by removing the panels on the bottom side.

The system is equipped with 1 Brushless radial motor.

The power supply required for operation is 380-440 Volt 50 Hz.

The system can also be supplied in the Master Smart+ version complete with management PLC and field probes.