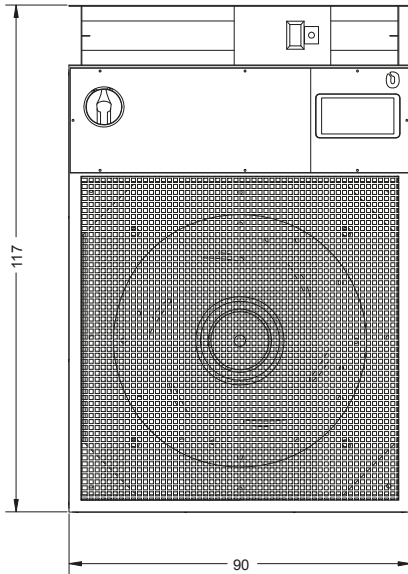
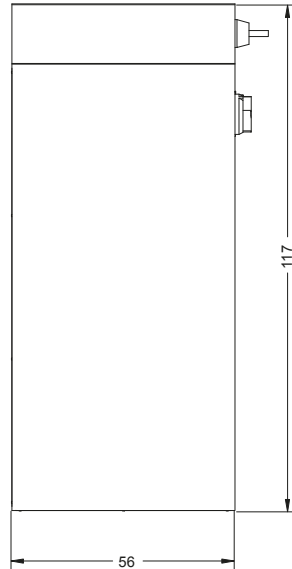


Model	RADI 200/3 EXTRACTOR	Voltage	380-440 Volt 50Hz	Weight	73 kg
Series	BLDC EC FAN	Power	1.200 W	Sound pressure level	79 Db
IP Code	43 BH	Maximum flow rate	11.500 m ³ /h	Total dimensions	90x117x56 cm
		Head	210 Pa	Suction size	50x80 cm

FRONT



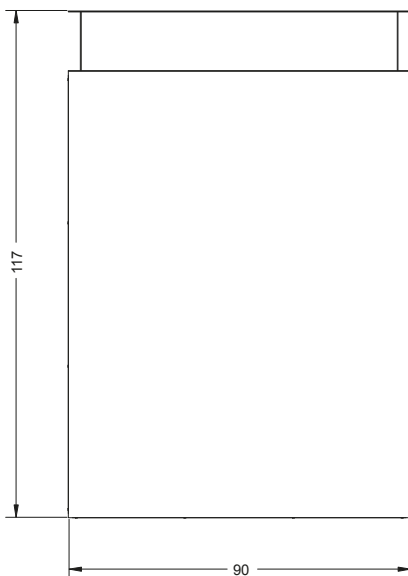
SIDE



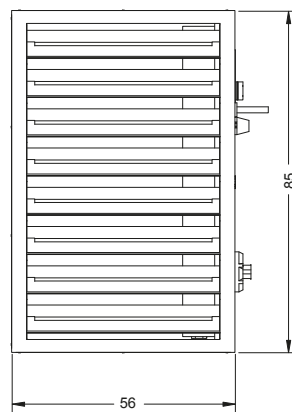
SMART+ MODEL



REAR



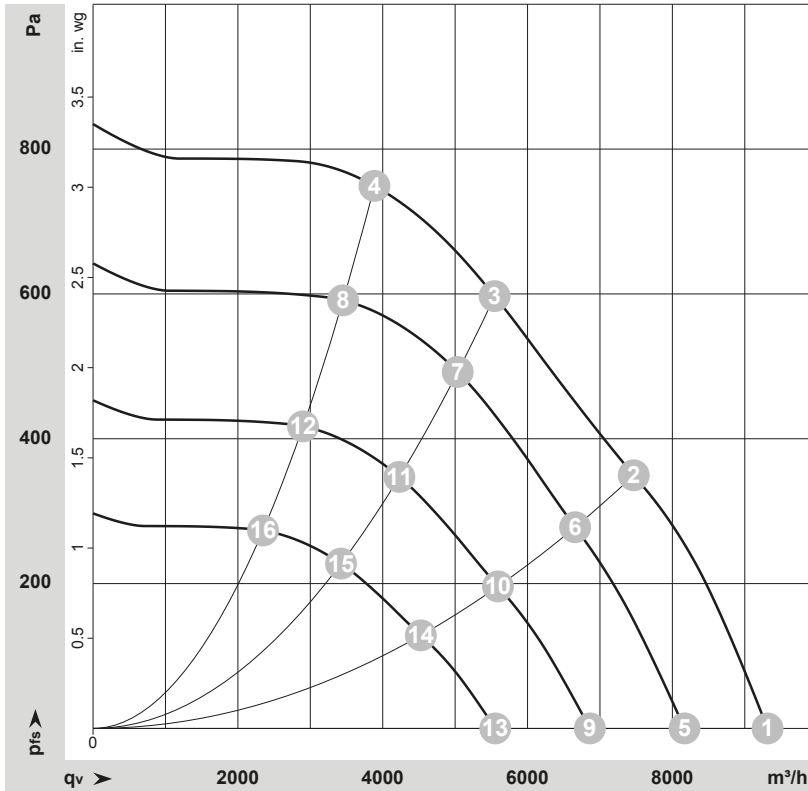
PLANT



SLAVE MODEL



Curves: Airperformance50Hz



Product information

Power supply:	380 - 440 V/3F/50Hz
Maximum power consumption:	1,200 W
Maximum current consumption:	2,10 A
Air flow range:	2600 - 11,500 m³/h
Nominal head:	210 Pa
Maximum noise level:	79 Db at 5 metres
Air flow rate modulation:	No
Electric fan motor:	Brushless
Number of fans:	1
Fan control:	0 - 10 Vdc analogue
Fan type:	Radial
Number of filters:	None
Filter size:	800x800x98
Air filter type:	-
Inlet air damper:	ON/OFF
Rain screen with anti-mouse mesh:	None
Servo motor damper:	Integrated
External intake temperature probe:	Integrated
Indoor environment probes:	2 (standard); 5 (optional on request)
External air humidity probe:	Integrated
Operating temperature:	5 - 55 °C
Installation:	Floor standing
Control and regulation:	PLC
PLC redundancy:	PLC with dual Keep Alive processors
Digital output alarms:	Yes
Well-being button management:	Yes
Event log memory:	Yes
Stop contact in case of FIRE:	Yes
Stop contact in case of FLOOD:	Yes
Remote ON/OFF:	Yes
ON/OFF of room air conditioners:	Yes
Alarm management of room air conditioners:	Yes
Air conditioners managed with digital I/O:	4
Air conditioners managed with rs485:	6
Manual force command dig.INPUT:	Yes
Operating logic:	Climate Controlled
User interface:	Colour touch screen display with screen saver
Communication:	RS485 / Modbus IP master/slave
Slave system:	Analogue slave
Degree of protection:	IP43 BM*
Machine size:	85x117x56cm
Weight:	73 kg
Type of switch to be installed:	Earth leakage circuit breaker 0.3 type B

Measuredvalues

	Wired	U	f	n	P _{ed}	I	LpA _{in}	LwA _{in}	Qv	P _{fs}	P _{fs}
		V	Hz	min ⁻¹	W	A	dB(A)	dB(A)	m³/h	Pa	in. wg
1	1~	230	50	2850	1114	4.90	77	84	8655	0	0.00
2	1~	230	50	2805	1500	6.60	73	79	7735	350	1.41
3	1~	230	50	2750	1500	6.60	68	76	5775	600	2.41
4	1~	230	50	2815	1500	6.60	71	78	2945	750	3.01
5	1~	230	50	2500	752	3.30	73	81	8085	0	0.00
6	1~	230	50	2500	1060	4.62	70	77	6330	278	1.12
7	1~	230	50	2500	1108	4.84	66	74	4520	495	1.99
8	1~	230	50	2500	1050	4.58	68	76	2725	593	2.38
9	1~	230	50	2100	446	1.96	69	77	6430	0	0.00
10	1~	230	50	2100	628	2.74	66	72	4795	196	0.79
11	1~	230	50	2100	658	2.88	62	69	4115	349	1.40
12	1~	230	50	2100	622	2.72	63	71	2450	418	1.68
13	1~	230	50	1700	236	1.04	64	71	4775	0	0.00
14	1~	230	50	1700	334	1.46	60	67	4265	128	0.51
15	1~	230	50	1700	348	1.52	56	64	2710	229	0.92
16	1~	230	50	1700	330	1.52	58	66	2175	274	1.10

Wired = Wiring · U = Voltage · f = Frequency · n = Speed (rpm) · P_{ed} = Power consumption · I = Current draw · LpA_{in} = Sound pressure level intake side
LwA_{in} = Sound power level intake side · P_{fs} = Pressure increase

Product description

The RotoKalt Summano Stans Ext smart+ 200 is a ductable Free Cooling system with both underfloor and overfloor delivery, with 200 Pa useful head.

The whole range is supplied with motor damper and filter.

The Summano Stans can also be used as an extract Free Cooling system.

equipped with 1 Brushless radial motor. The power supply required to operate the system is 380-440 Volt 50 Hz.

The system can also be supplied in the Slave version without management PLC and field probes.